

In 1938, Vogt revolutionized the ice making industry by introducing the world's first automatic sized icemaker, the Vogt Tube-Ice machine. Today, Vogt Ice offers a variety of ice options including Tube-Ice, fragmented ice, flake ice, and cracked ice produced by the VT Series. Vogt ice machines enjoy a well-earned reputation as the most energy efficient, dependable ice machines on the market.

VT 60 Features

- R404A Refrigerant
- Patented, roto molded, sanitary water distributor
- Copeland Disc compressor for efficient operation
- Sealed Chopper bar
 - Sealed ball bearings to prevent leaks
 - Direct drive gear reducer - no belts
- Vertical, double walled stainless steel tube evaporator for proven longevity
- PLC control featuring:
 - Controlled restart after power outage to prevent freeze ups
 - Adjustable ice thickness
 - Cutter delay at start of harvest
 - Error code notification to identify problem area quickly
- UL Approved control panel
- Air-cooled condensers - remote or self contained
- Standard casings are hot dipped Galvanneal for long lasting maintenance free corrosion protection

Options Available:

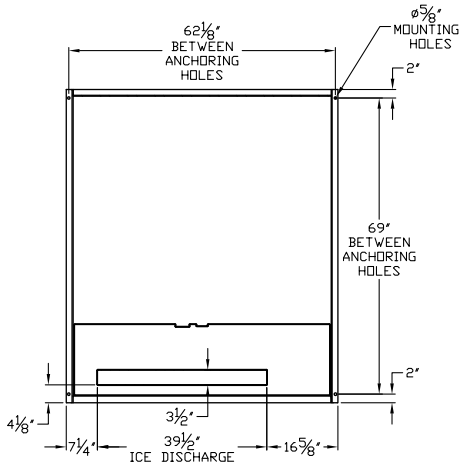
- Stainless steel evaporator casings
- Skid mounted self contained package unit or split system
- Remote control panel for ON-OFF control and failure indicator light



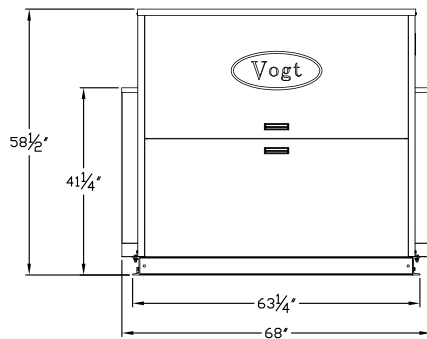
VOGT CRACKED ICE MACHINES

Model
VT60

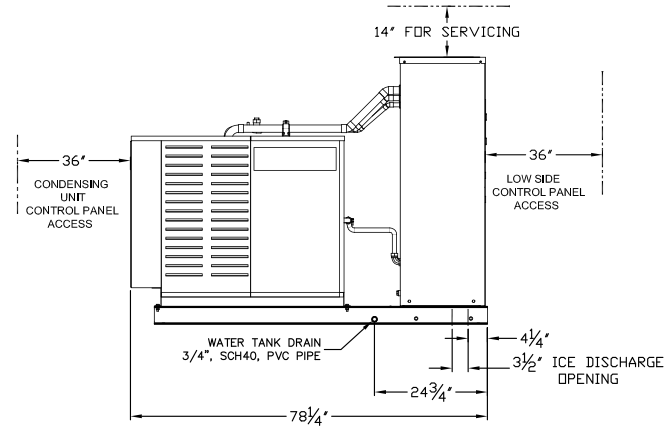
Skid Mounted



Footprint & Ice Discharge Location

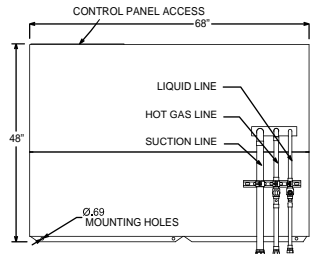


Front View

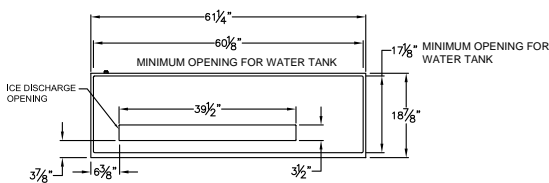


Side View

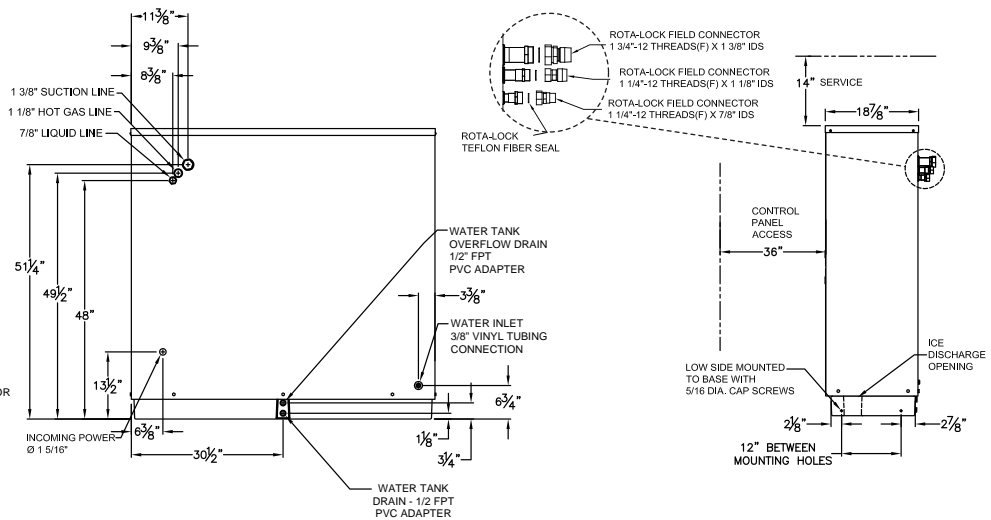
Split System



Highside Footprint



Lowside Footprint & Ice Chute Location



Lowside Rear View

Lowside Side View

Dimensions									Shipping Weight		
Package Machine			Split System						Package Machine (lbs)	Split System	
			Lowside			Highside				Lowside (lbs)	Cond Unit (lbs)
Height	Width	Depth	Height	Width	Depth	Height	Width	Depth			
58"	68"	78"	58"	61"	19"	37"	68"	48"	2290	650	1330

Air Cooled Ice Machine Electrical Information				System Charge (lbs)	Ice Capacity			Ice Making Water		
F.L.A.	Min. Ampacity	Max. Fuse	Service to Machine		Makeup Water Temp (Deg. F)	Ice / 24 hrs (lbs)	Ice / cycle (lbs)	Usage/100 lbs of Ice (gal)	Makeup Water Flow Rate	
								(gpm)	(gph)	
54.6	65.1	105	75	32	70	6500	36	12.0	0.54	32.5

* Note: A fused disconnect must be provided near the machine

Capacities based on 90 Deg F. Ambient - water flows based on zero blowdown. Electrical Ratings based on standard voltage of 208/230v., 3p., 60hz.

Motor Information												
Water Pump			Cutter Drive			Condenser Fan			Compressor			
H.P.	F.L.A.	Phase	H.P.	F.L.A.	Phase	H.P.	Total F.L.A.	Phase	H.P.	L.R.A.	R.L.A.	Phase
1/20	1.0	1	1/2	3.7	1	2 @ 1/3	6.4	1	10	215	42	3

*Packaged machines consist of both lowside and highside systems on one skid. Split system machines have a lowside with a remote highside (condensing unit).

Revision 8/2012

Vogt
Tubelce | Turbo
Engineered to Endure

Vogt Ice, LLC
1000 West Ormsby Ave.,
Louisville KY 40210
Phone: 502-635-3000
E-mail: info@vogtice.com

